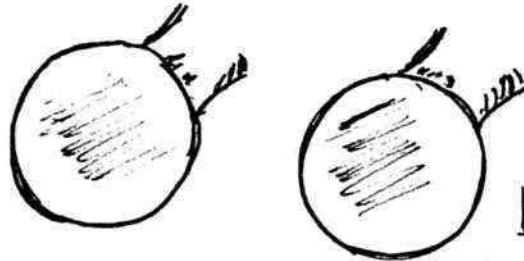


# Look and Find 3

All the things shown on this page can be found somewhere in the Museum.  
 They may be on the walls  
 On or in the carriages  
 In the glass cases  
 On the posters ...or anywhere!

Find - Put a ✓ in the box and write the name.

.....

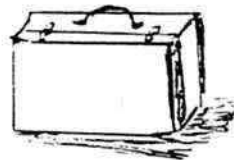


buffers

.....

G N R

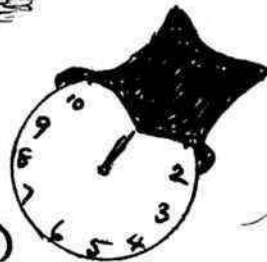
.....



a suitcase

.....

a clock with a hat



G C R

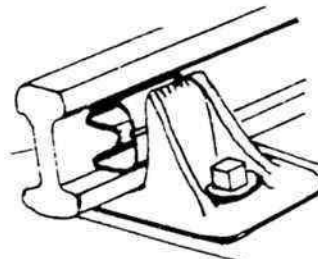
.....



locomotive funnel

.....

.....



a piece of rail and a chair  
that it sits in.